

# Art in Post-Reality

## Critical and Creative Approaches to AI

IML 475: media arts research lab  
Thursdays, 2:00 - 5:50 pm | 4 units

Reality already feels very strange, and now generative AI is fostering novel creative capabilities at mass scale. In this lab, students engage generative AI critically and creatively through an experimental, research-oriented approach, developing their own poetics as artists and creative practitioners participating within the contemporary media mani-fold. Through screenings, readings, discussions, and hands-on making, students will actively engage emerging tools of AI to further their own creative practice and critical inquiry.

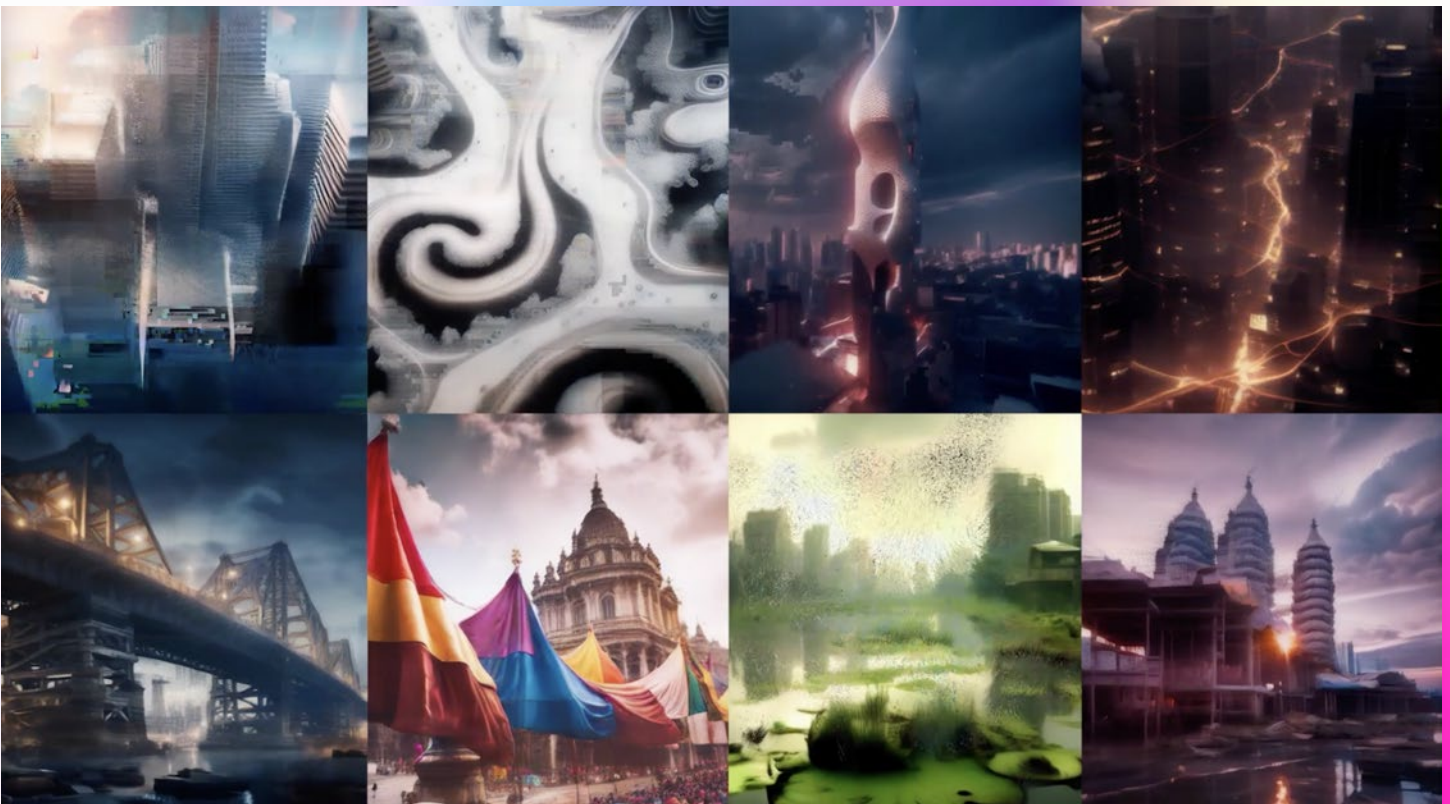


Image: Stavros Didakis, Neural Cityscapes, an eight-channel media installation made with custom software, machine learning, latent diffusion models, and TouchDesigner.