

Art in Post-Reality

Critical and Creative Approaches to AI

IML 475: media arts research lab
Thursdays, 2:00 - 5:50 | 4 units

Reality already feels very strange, and now generative AI is fostering novel creative capabilities at mass scale. In this lab, students engage generative engines through an experimental, research-oriented approach, developing their own poetics as artists and creative practitioners participating within the contemporary media manifold. Through screenings, readings, discussions, and hands-on making, students will actively engage emerging tools of AI to further their own creative practice and critical inquiry.

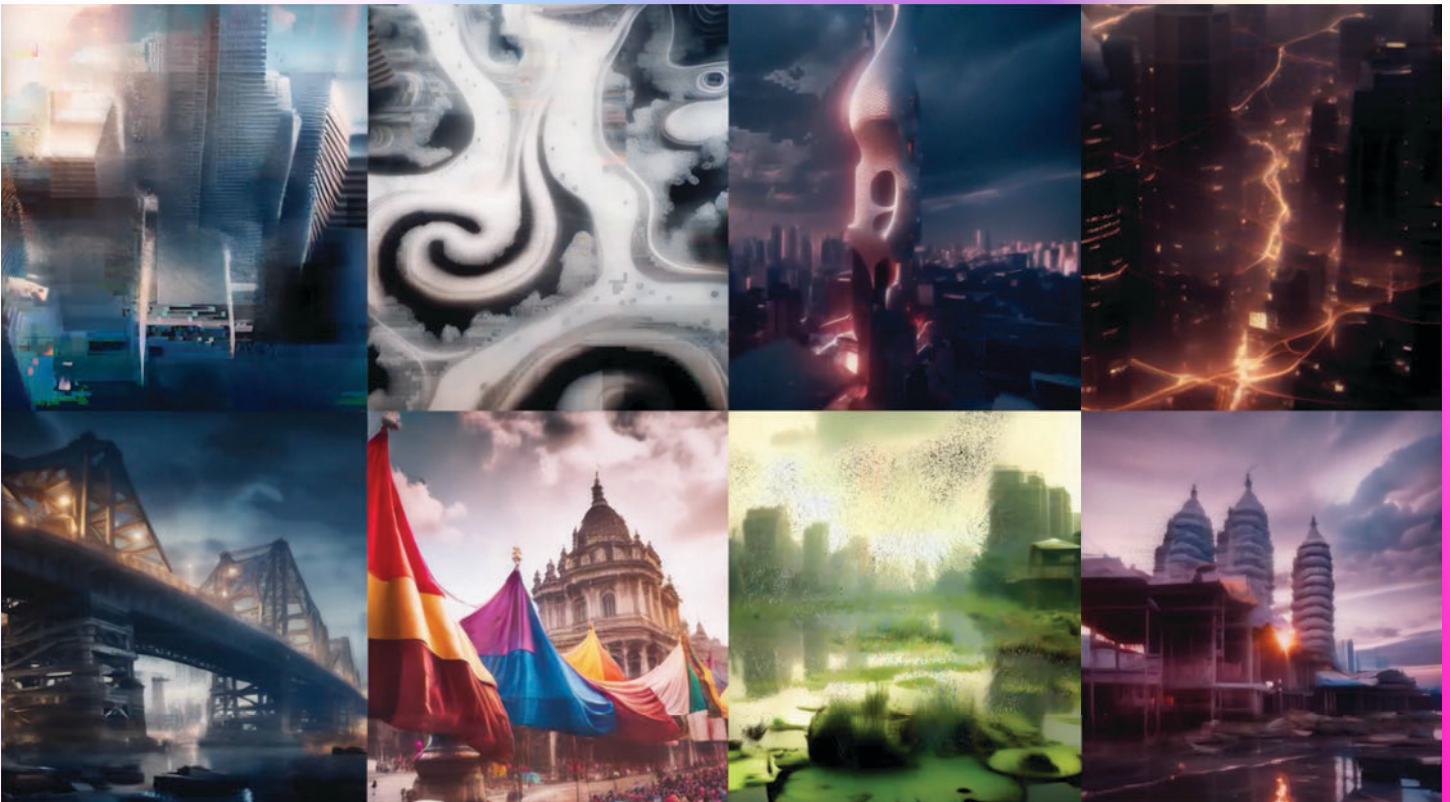


Image: Stavros Didakis, Neural Cityscapes, an eight-channel media installation made with custom software, machine learning, latent diffusion models, and TouchDesigner.