

PAINTING I

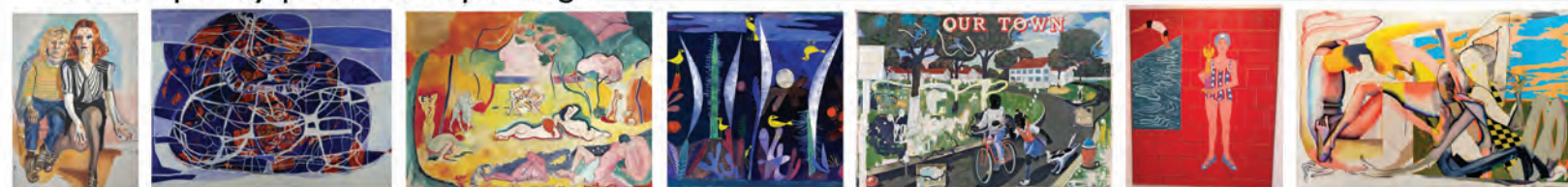
PTG 120 - Tues/Thurs - HAR 203 3-5:40

Spring 2020 - Instructor, JOVI SCHNELL



Above images are student work from Spring 2019

Come explore a practical introduction to painting! Learn the basics and go beyond. This class will cover the methods and materials necessary to paint in both oil and acrylic pigments. Projects are designed to provide experience in color, composition and perception from the observed to the imaginary. Create your own painting supports, feel confident in mixing color and explore a variety of paint applications. Over the course of the term students can expect to complete six paintings and maintain a process journal for the development of their work. Through class demos, group critiques, self-guided research, slide presentations and a visiting artist, students will advance their skills in painting, work to form their own voice and broaden their knowledge of the historical and contemporary practices of painting.



USC Roski, Spring 2020
ART – 120 Intro Painting, Units 4
T & TH 3:00PM – 5:40PM, Harris Painting Studio 203
Class Dates Jan 13 – April 30, Exams TBD
Instructor, Jovi Schnell
Office Hours: 2 pm – 3 pm & by appointment

Course Description & Objectives

This Introductory class covers the materials, methods, terminologies and specific medium based techniques for the practice of painting. The objective of this course is to supply a strong foundation from which student feel confident to leap towards more advanced explorations of the material. Over the semester students will learn and employ the concepts of color theory, conceptual approaches that apply to both abstract and realistically painted forms, the creation of structure and space, grasp the workings of compositional dynamics and learn to read the myriad ways of ways that content can be read within a painting. In the first half of the semester students will work from observation via the still life and class led assignments in oil-based media. Towards the second half of the semester students may choose to include working with acrylic materials and will draw from their process journals to develop personal approaches and strategies towards the creation of three paintings by the end of the semester. Through class demos, self-guided research, group critiques, slide presentations and visiting artist, students will increase their knowledge of the historical and contemporary practices of painting and gain a survey of approaches to the medium. Students are expected to work on their paintings, research and process journals outside of class time.

Learning Outcomes

1. Visual Communication & Literacy
2. Knowledge of Historical and Contemporary Context of Visual Practice
3. Written & Verbal Communication - Methods of Critical Analysis
4. Program-Specific Techniques and Concepts: Painting & Drawing Practice.

Requirements & Evaluation is based on:

- A. Attendance, three unexcused absences result in failing a grade level, leaving early and arriving late more than three times results in a grade reduction. Preparedness to work. Please inform me when you know that you will be absent or late. Communication is key. It is important that you be present for ALL critique days.
- B. General drive, attitude, and involvement in group discussions and activities
- C. Seriousness of effort to create and complete work. Focus & concentration.
- D. All assignments and Weekly Studies will be individually graded and evaluated the day they are due. No Exceptions. Make up work or late work will be graded as such.
- E. Students will be notified of their progress at the Midterm and Final grade.
- F. Cell phones in the painting studio are utilized as a tool towards class content only. Avoid casual texting, social media scrolling & digital distraction. Students found abusing this policy will have their grade reduced.

Individual Assignment Grading: 10 Point Scale Max. 100 Points per assignment.

1. Color
2. Light
3. Texture
4. Drawing
5. Composition
6. Conflict (excitement)
7. Research, Idea
8. Uniqueness
9. Space (scale)
10. Unity and variety (order & chaos)

Course Final Grades will be determined using the following scale

A	95-100
A-	90-94
B+	87-89
B	83-86
B-	80-82
C+	77-79
C	73-76
C-	70-72
D+	67-69
D	63-66
D-	60-62
F	59 and below

Work Expectations

- 4 Canvas Board Studies – Instructor led class exercises focusing on Color work & Still Life
- 1 Process Journal / Sketchbook – Semester long investment, 3 entries per week.
- 3 Paintings on Stretched Canvas – Assigned Subjects + Personal Approaches

Class Assignments & Grade Percentages

- 1.A 10%, Canvas Board, 18 x 24, Half /Value Grid - Half /Intensity Grid – Use Sides/ Brushstrokes. 1.B 10%, Canvas Board, 18 x 24, B & W, Still Life Canvas Board, Still Life
 2. 10% Canvas Board, 18 x 24, Burnt – Sienna - Monochrome, Still Life
 3. 10%, Canvas Board, 18 x 24, Complementary, Still Life, Individual Post – Consumer Still Life
 4. 10%, Stretched Canvas # 1, 24 x 36 - **Artifacts from Memory Palace**: Collective Still Life
 5. 10%, Stretched Canvas #3, 30 x 36 - **Portrait is the Place**: Seated Self Portrait or Avatar created from Analog Archive.
 6. 20%, Stretched Canvas #4, 40 x 46 – **Wild Beasts**: Dominate Triadic Color Palette
 7. 10%, **Analog Archive / Sketchbook**
 8. 10%, Participation in Class Discussions and Critiques
- All Assignments combined total 100 points - %100. * Extra Credit - **Final Show & Tell**
(Please see **Class Schedule Document** for descriptions of Assignments # 5 – 9)

STUDIO MAINTENANCE AND CLASSROOM CONDUCT

This studio is used by other classes. Thoroughly clean your work area at the end of each class session. No material, paintings, or trash may be left. **DO NOT USE MATERIALS FROM OTHER CLASSES.** Do not ever throw paint, thick washes, or any solid materials down the sink drain (scrape everything possible into the trash can).

When we are painting, you are welcome to listen to your own music, provided you keep it low enough to hear an announcement, or use only one ear-bud. Time in the studio and during lectures is not used for phone calls, texting, or surfing the web. So unless it is directly related to painting your painting please let the devices be. Embrace the studio time to create and think about painting.

- Dispose of all used OMS and oil in the covered rounded red metal can.
- Dispose of all oily and OMS rags and paper towels in the covered small red trash can.
- Scrape all waste solids and paint into the regular trashcan.
- Do not pour oil or OMS down the sink.
- To clean brushes, first squeeze out all excess paint onto a paper towel. Then swish the brush in OMS to remove almost every bit of paint. Final clean up on brushes should be with soap and water in the sink.
- Keep OMS jars and medium covered as much as possible. Do not leave solvents uncovered when you are not using them.

STUDIO ACCESS

Your USCCard (not just a regular ID) will be programmed with the door's card reader for 24/7 access (fill out a form that I will provide). You can work on your paintings whenever other classes are not in session. Class times are posted on the door. To get into the building before 7AM, after 7PM, and on weekends and holidays, you will need to use your USCard at the card reader located on the first floor on the northeast side of Watt Hall.

- **DO NOT PROP OPEN ANY DOOR AT ROSKI!!** Not even to run to the bathroom.

This jeopardizes you and others in the building. Violation will be reported to the office of Student Judicial Affairs.

- Do not share your USCard with anyone. You are responsible for individuals that you allow into the buildings.
- In the event that your USCard is lost or stolen, please notify the USCard office by calling 213.740.8709 or by visiting the Customer Service Office Located in Parking Structure X.
- Please immediately notify DPS at (213) 740-4321 if secure access to the USC Roski School of Art and Design buildings has been jeopardized through the unauthorized use of the access system or USCard.

TURN IN YOUR COMPLETED FORM BY 1/25. TEMPORARY ACCESS CODE UNTIL END OF JANUARY: 914826

Statement on Academic Conduct and Support Systems **Academic Conduct**

Plagiarism – presenting someone else's ideas as your own, either verbatim or recast in your own words – is a serious academic offense with serious consequences. Please

familiarize yourself with the discussion of plagiarism in *SCampus* in Part B, Section 11, “Behavior Violating University Standards” policy.usc.edu/scampus-part-b. Other forms of academic dishonesty are equally unacceptable. See additional information in *SCampus* and university policies on scientific misconduct, <http://policy.usc.edu/scientific-misconduct>.

Support Systems:

Student Counseling Services (SCS) – (213) 740-7711 – 24/7 on call

Free and confidential mental health treatment for students, including short-term psychotherapy, group counseling, stress fitness workshops, and crisis intervention. engemannshc.usc.edu/counseling

National Suicide Prevention Lifeline – 1 (800) 273-8255

Provides free and confidential emotional support to people in suicidal crisis or emotional distress 24 hours a day, 7 days a week. www.suicidepreventionlifeline.org

Relationship and Sexual Violence Prevention Services (RSVP) – (213) 740-4900 – 24/7 on call

Free and confidential therapy services, workshops, and training for situations related to gender-based harm. engemannshc.usc.edu/rsvp

Sexual Assault Resource Center

For more information about how to get help or help a survivor, rights, reporting options, and additional resources, visit the website: sarc.usc.edu

Office of Equity and Diversity (OED)/Title IX Compliance – (213) 740-5086

Works with faculty, staff, visitors, applicants, and students around issues of protected class. equity.usc.edu

Bias Assessment Response and Support

Incidents of bias, hate crimes and micro aggressions need to be reported allowing for appropriate investigation and response. studentaffairs.usc.edu/bias-assessment-response-support

The Office of Disability Services and Programs

Provides certification for students with disabilities and helps arrange relevant accommodations. dsp.usc.edu

Student Support and Advocacy – (213) 821-4710

Assists students and families in resolving complex issues adversely affecting their success as a student EX: personal, financial, and academic. studentaffairs.usc.edu/ssa

Diversity at USC

Information on events, programs and training, the Diversity Task Force (including representatives for each school), chronology, participation, and various resources for students. diversity.usc.edu

USC Emergency Information

Provides safety and other updates, including ways in which instruction will be continued if an officially declared emergency makes travel to campus infeasible. emergency.usc.edu

USC Department of Public Safety – UPC: (213) 740-4321 – HSC: (323) 442-1000 – 24-hour emergency or to report a crime.

Provides overall safety to USC community. dps.usc.edu

ROSKI ADMISSIONS INFORMATION

For information and an application to become a Fine Arts minor, please visit <https://roski.usc.edu/admissions/admission-minors>. Please contact the art advisors at 213-740-6260 with any questions about a minor in the Fine Arts. To become a Fine Arts major, please contact Penelope Jones at penelope@usc.edu or 213-740-9153 with any questions. Applications are due every October 1st and March 1st.